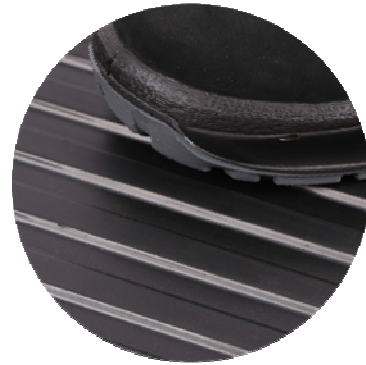


wide ribbed *mats*

flooring for step mats, cable bridge, sheets of drawers, sale displays, stock areas and sale areas and vehicles



product information

colour:	black
material:	NR/SBR Elastomer
thickness:	6 mm
delivery form:	rolls

rev. April 2014

technical data

tensile strength:	approx. 3,5 N/mm ²
elongation of break:	approx. 300 %
hardness:	65 ±5° Shore A
density:	1,45 g/cm ³
working temprature range:	-30 bis +60°C

notes

Our advice is given to the best of our knowledge, but only as a non-binding reference and does not exempt our own examination of the products supplied by us for their suitability for the intended procedures and purposes. The specified technical data are guide values, i.e. experience values from longer production periods. The processing of our products is beyond our control and is therefore exclusively within your area of responsibility. Of course, we guarantee the perfect quality of our products according to our general sales and delivery conditions. Due to raw material and production, as well as by external influences (temperature, humidity, etc.), the stated values can fluctuate by up to ± 25%